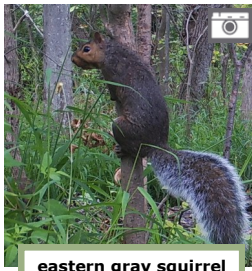


What do you see?



The natural plant communities within the park consist of the artificially created pond at the beginning of the outlet, the outlet itself which is classified as an

unconfined river, and an adjacent floodplain forest interspersed with marsh areas. Mill Creek is on the northern edge of the park. As you walk the trail you will see lots of different birds including wood ducks, mallards, great blue herons, green herons, bald eagles, turkeys, and hooded mergansers, along with a plethora of song birds. There are many frog and toad species, including the tree frog and the American toad. The plant life is diverse. In the wetland areas you may find jewelweed, cattails, and red osier dogwoods. As you look at the trees around you may come across willows, cottonwoods, black walnuts, tulip poplars, and silver maples.



eastern gray squirrel

Throughout this brochure, there are numerous trail camera photos taken through the Finger Lakes Watch Program that show the diverse wildlife within Sandy Bottom Park.



woodchuck

Fun fact: they are New York's largest member of the squirrel family!



white-tailed deer

What do you hear?

A mallard duck or Canada goose landing and splashing in the water. Choruses from spring peepers or tree frogs. A chickadee singing their "Chick-A-Dee-Dee-Dee" song. Water flowing through Mill Creek. Pileated woodpeckers knocking on a tree to find its next meal or build a new home. Kids playing and laughing at the beach and playground. Boats on the lake cruising to their favorite fishing spot.



Canada goose



spring peeper



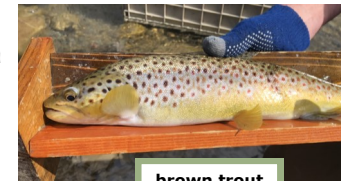
Nature Trail Guidelines:

- ◆ Please keep your dogs on a leash and pick up after them.
- ◆ Please do not take or disturb any plants or wildlife in the park.
- ◆ **PLEASE AND THANK YOU FOR KEEPING OUR TRAILS CLEAN!**

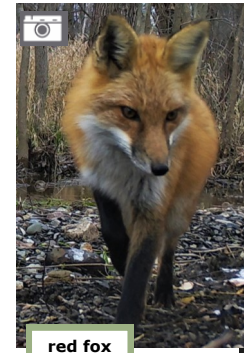


Who's hiding?

Under the wet leaves on the forest floor or a fallen tree, you might find some newts or salamanders. Cast a line into Mill Creek and you might just catch a brown trout who is feeding on macroinvertebrates such as mayflies and caddisflies. Possibly a sly red fox sneaks by without you noticing. Raccoons, which are very common here, are typically pretty busy in the park after closing hours, but you may find their tracks in the mud.



brown trout

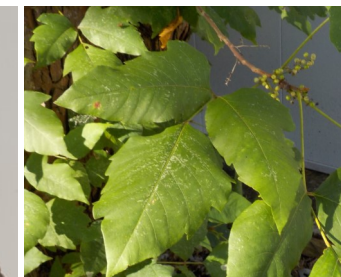


red fox



raccoons

Be aware of your surroundings: Whenever you are hiking or taking a stroll in the outdoors, it is important to be aware of ticks and to check yourself and your dog after your adventures. For more information, go to NYS Department of Health's website. Poison Ivy does grow here at Sandy Bottom so stay far from this plant if you see it! It can be found on the ground or growing as a vine up a tree. It's always best to stay on the trail to avoid coming in contact with this plant.



Sandy Bottom Park Nature Trail



Please enjoy our park and trails during all four seasons!



This brochure was prepared by the Friends of Sandy Bottom Park and funded by the Town of Richmond.

Park Highlights

The Sandy Bottom Nature Trail System consists of 4 distinct trails that meander through the wetland at the north end of Honeoye Lake. The Honeoye Outlet, which runs through this wetland, becomes Honeoye Creek and continues through Ontario and Monroe Counties and eventually empties into the Genesee River. The Sandy Bottom Nature Trail system was created through the generosity of the Jack Evans family and the efforts of faculty and students from Finger Lakes Community College, local Boy Scouts, Friends of Sandy Bottom Park, and the Town of Richmond. The Purple Martin Sunset Trail connects Main Street to Sandy Bottom Beach, parallel to and west of the Honeoye Outlet. The Blue Heron Nature Boardwalk Trail crosses the Honeoye Outlet and includes a covered observation deck which is an ideal spot to contemplate the natural beauty of the park, sight birds, and enjoy the sounds of wildlife. The Gold Finch Mill Creek Trail also crosses Honeoye Outlet Creek and runs along the north bank of Mill Creek. In 2008 the 3M Corporation donated 54 acres of vacant agricultural land to the Town of Richmond for recreational and educational purposes. These 54 acres are contiguous with the original Sandy Bottom Park and have been incorporated into the park system. The Red Hawk 3M Field Trail encircles these 54 acres and is popular with hikers, dog walkers, bird watchers, and even Honeoye Central School's cross country team. All park trails are very popular for winter hiking, cross country skiing, and winter bird watching. Flora and fauna educational signage can be found on the Red Hawk 3M Field Trail along Mill Creek as well as along the Purple Martin Sunset Trail.

