

## A Glimpse Into The Past

Golden Hill State Park was acquired by New York State in 1962. The Thirty Mile Point Lighthouse, decommissioned in 1958 by the United State Coast Guard, is now owned by the New York State Office of Parks, Recreation and Historic Preservation. Thirty Mile Point Lighthouse received national recognition when it was selected to represent Lake Ontario in the "Lighthouses of the Great Lakes" stamp series. The lighthouse was pictured on a 32-cent United States postage stamp in 1995.

Thirty Mile Point Lighthouse was built in 1875 to warn of a rocky shoal and shifting sandbar in Lake Ontario. There is evidence of five major shipwrecks that have taken place here. One of the most famous took place on October 31, 1780 when the H.M.S. Ontario, a British naval vessel, was caught in an unusual storm. Eighty-eight lives, including seventy-five crew members, and \$15,000 in Army payroll were lost.

The lighthouse, more than 60 feet high, is constructed of cut stone shipped by schooner from Chautauque Bay on the Eastern end of the lake. The lens, installed for \$3,300, was purchased from France. The navigational light produced 600,000 candlepower and could be seen 18 miles. It was the most powerful light on Lake Ontario and the fifth most powerful on the Great Lakes. Although decommissioned, the current light in the tower was re-lit and is maintained by the Friends of Thirty Mile Point Lighthouse.

### IN AN EMERGENCY

Park Police.....716-278-1777  
Police, Ambulance, Fire.....911

[www.nysparks.com](http://www.nysparks.com)

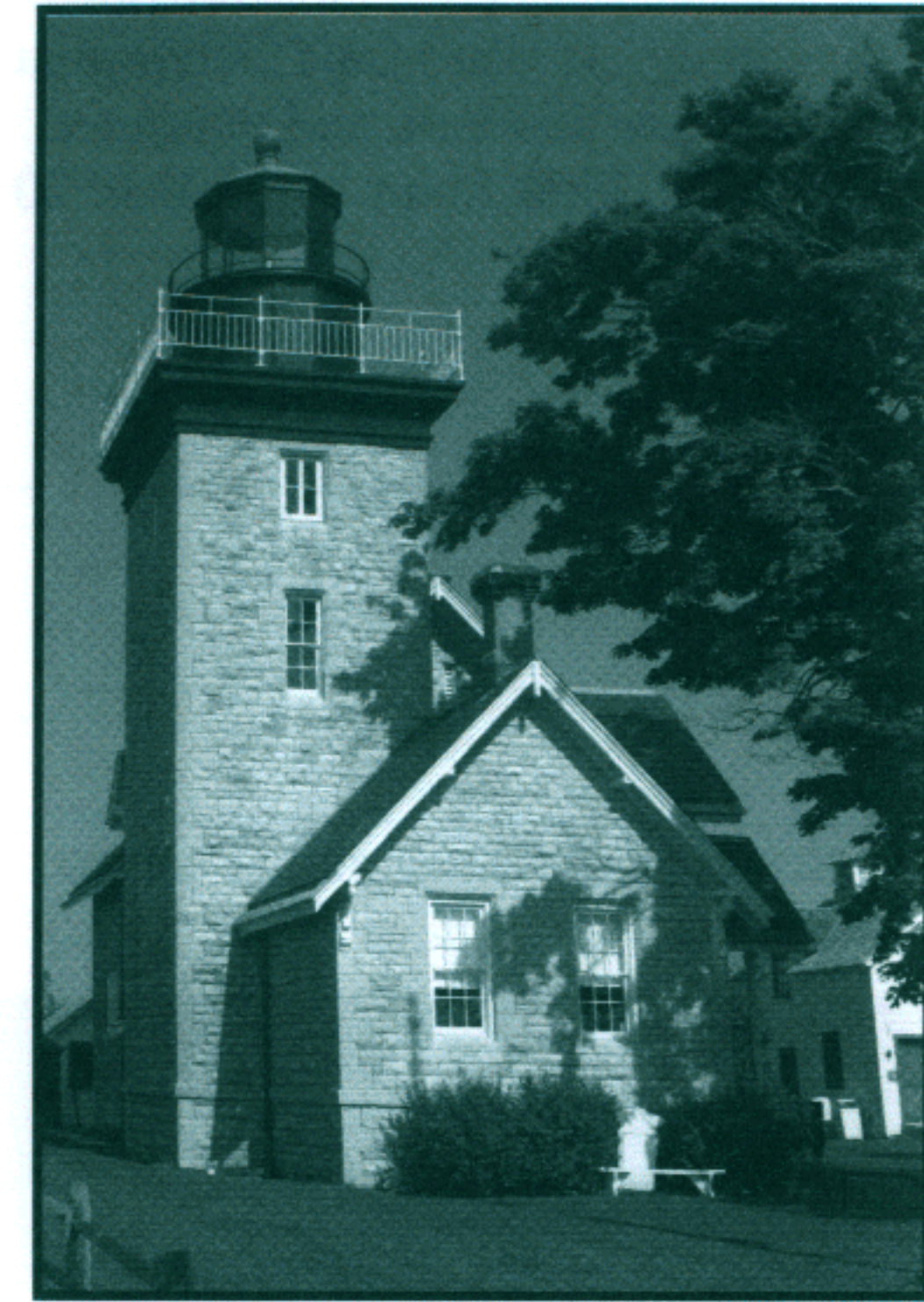


State of New York  
Eliot Spitzer, Governor  
Office of Parks,  
Recreation, and Historic Preservation  
Carol Ash, Commissioner  
An Equal Opportunity/Affirmative Action Agency

Produced by JMF Publishing, Inc.  
30 Burr Ave., New York Mills, NY 13417  
For advertising information call 315-768-7137

Golden Hill State Park  
9691 Lower Lake Road  
Barker, NY 14012

## 30 Mile Point Lighthouse



### Golden Hill State Park

9691 Lower Lake Road  
Barker, NY

Park Office: (716) 795-3117  
Campsite Office (716) 795-3885



## 30 Mile Point Lighthouse

Tall and proud, Thirty Mile Point Lighthouse towers over Lake Ontario's shoreline. Its colorful history begins with a shoal and an elusive sandbar that once existed thirty miles east of the Niagara River. At least four ships have sunk in these treacherous waters, the first belonging to the French explorer LaSalle in 1678. In 1780, the H.M.S. Ontario met its fate in a Halloween blizzard. It carried 88 passengers and an army payroll estimated at more than \$15,000 in gold and silver. Debris washed ashore the following day but no survivors or gold were ever found. The Mary, loaded with merchandise for the Niagara region, sank in 1817. In 1834, a local farmer searching for his cows near the mouth of Golden Hill Creek reported seeing men disembark from a ship, row up the creek a short distance and unearth a chest from the creek bank. Frightened, the farmer stood helplessly by as they silently spirited the chest away. Treasure hunters believe the story and continue to dig along the creek.

Is this why this section of Niagara County's Town of Somerset is called "Golden Hill"? Actually, it is more likely that the true story tells of a one-acre island covered with goldenrod blooms that once existed at the mouth of the creek. Long since eroded away, its "golden" appearance may have suggested the name. Maps of the early 19th century bear the name "Golden Hill" - perhaps so named by French explorers.

Thirty Mile Point Lighthouse was built in 1875 at a cost of \$90,000. The stone for its 70 foot tower and attached keepers quarters was imported from Chaumont Bay at the eastern end of Lake Ontario.

The Third Order Fresnel lens was housed in the lantern room. This six-sided lens was so powerful that it magnified a kerosene flame to more than 600,000 candlepower. Its beacon was visible for eighteen miles. A precision clockwork movement of counterweights turns the lens which originally cost

\$3,300. In later years the clockwork was electrified and a 500 watt bulb replaced the kerosene lamp.

Over the years, the lighthouse was staffed by brave and hard working keepers and their families. From 1875-1935, these personnel served under the jurisdiction of the U.S. Lighthouse Service which, in turn, reported to the U.S. Congress. In 1935, the Coast Guard took over responsibility; increased the size of the keepers house for two families, added a foghorn building and operated the lighthouse in a military manner.



In 1958, the Coast Guard removed the lens and decommissioned the light. A steel tower with an automatic beacon replaced the light in the lantern room. In 1984, the United States turned over the lighthouse, the surrounding property and associated buildings to the New York State Office of Parks, Recreation and Historic Preservation. The lighthouse was soon entered upon the National and NYS registry of Historic Places.

In recent years, Thirty Mile Lighthouse has enjoyed a rebirth under the stewardship of the New York State Parks System. In 1994, the NYSOPRHP received a grant provided by the Environmental Quality Bond Act of 1986. These funds were used to restore the lighthouse roof to slate and purchase a new furnace for the building. The Golden Hill Park

Staff, under the direction of Park Manager Tom Harris, has spent many hours replacing windows and storms, painting the exterior trim and refinishing the beautiful oak floors and entry doors. In 1997, wiring was replaced in the building and emergency lights added.

These improvements, along with a national resurgence of interest in lighthouses have brought many new visitors to Eastern Niagara County. In 1995, a special Celebration Day was held to commemorate the issuance of the First Class postage stamp designed by Howard Koslow, of Tom's River, NJ. Over 5,000 visitors enjoyed the festivities and friendship at Golden Hill that day.

The Friends Of Thirty Mile Point Lighthouse is a non-profit organization that assists the NYSOPRHP in restoration, preservation, interpretation and promotion of Thirty Mile Point Lighthouse.

Initially a dream of local residents and chartered by the NYS Education Dept. in 1996, members actively participate in fundraising, grant writing, and restoration. A primary goal is to return the Great Lakes Maritime history to Thirty Mile Point Lighthouse so future generations may appreciate the significance of past eras in American history. Members assist the park interpreter with tours and programs that enthrall visitors of all ages.

In July of 1996, the organization sought and received a grant from the Rural Preservation League of NYS in the amount of \$4,000. The International Chimney Corp. Of Buffalo, NY was selected to complete a detailed assessment that would ascertain the condition of the building. This report identified specific areas of concern and has been used for developing a long range plan for the future restoration projects at the lighthouse. Fundraising is an ongoing necessity to accomplish these goals and the Friends of Thirty Mile Point Lighthouse sponsor yearly events with this in mind. A small gift shop at the campsite office is a cooperative effort that helps park patrons remember their visits with souvenirs.

The Friends Of 30 Mile Point Lighthouse actively seek new members. Your membership will place you on our mailing list for newsletters and event announcements. Meetings are held on the second Thursday of each month Feb- Nov at 7 p.m. at the lighthouse. Annual dues are \$5.00/Individual - \$10.00/Family. If you would like to join please complete this form and return to:  
Friends of 30 Mile Point PO Box 20  
Barker NY 14012

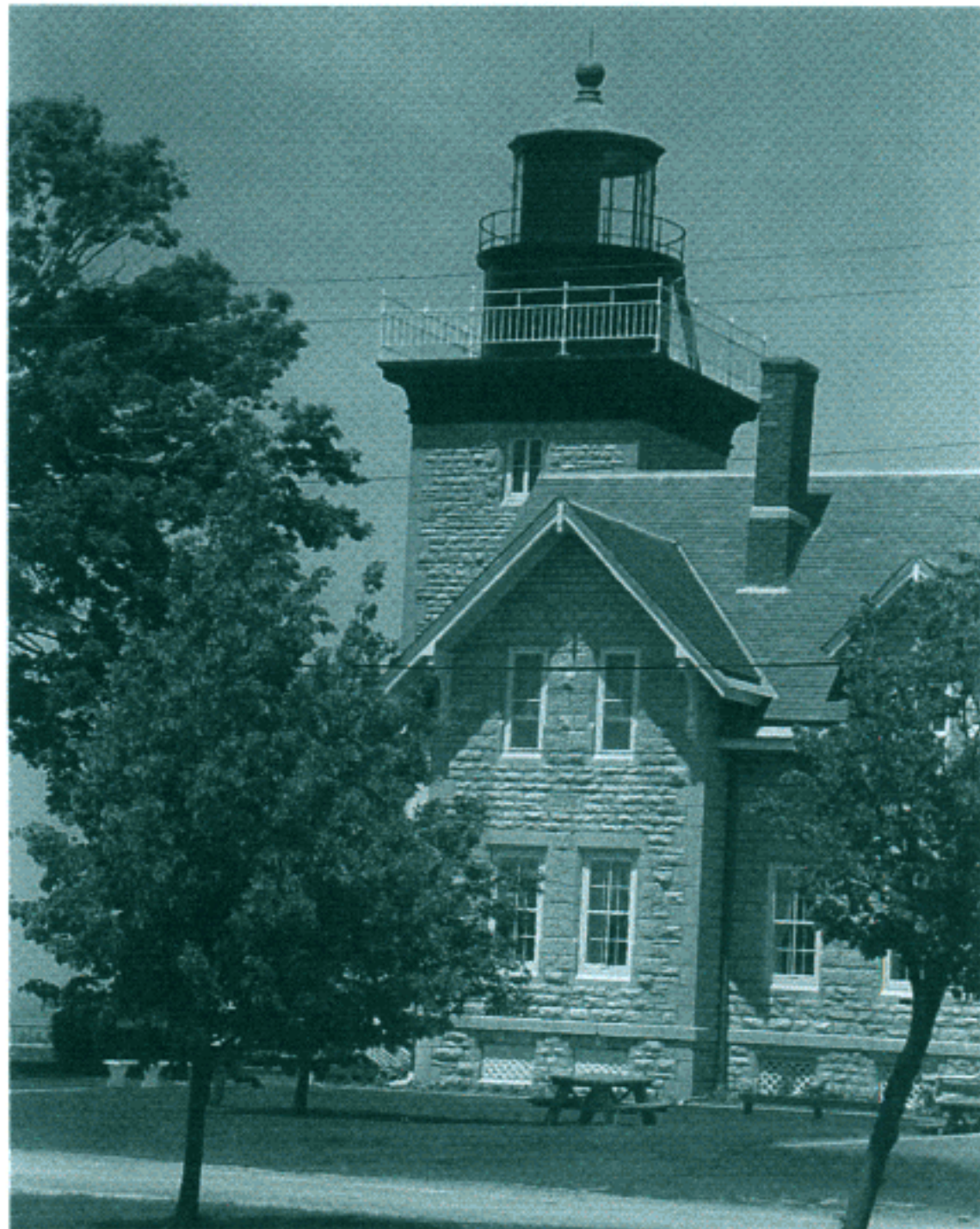
NAME:

---

ADDRESS:

---

Your membership will be mailed to you.  
Thank You!



## Walking Tour of 30 Mile Point Lighthouse

Prepare yourself for a walk into the past. Place yourself within the year 1875; No electricity, running water, telephones, computers or other conveniences.

**#1: STARTING POINT:** The grey stone of the lighthouse and tower were brought here by a schooner from Chaumont Bay, near Watertown, N.Y. These hand-cut stone were probably placed using ropes, pulleys and horsepower. **Follow sidewalk to Point #2.**

**#2. BARN:** You are now looking at the horse stables and barn, constructed at the same time as the lighthouse. Inside the barn were horse stalls and ample storage for the straw and feed. The horses and carriage provided contact with the outside world and were an important part of life at the lighthouse. **Walk toward the the lake.**

**#3. COAL/WORKSHOP:** This white building is a small workshop with a coal storage bin that is still stocked. The lighthouse was heated by coal and wood which was carried from this building. Thank goodness for thermostats!

**#4: WELL/PUMP:** This round building houses a well and pump. It was necessary to carry drinking water into the lighthouse before there were electric pumps and water lines.

**#5. THE OUTHOUSE:** This building is the original outhouse. A classic two-holer with plastered walls.

**#6. FOG HORN:** Before this building was converted to a Visitors Center, it was the Foghorn Building for the U.S. Coast Guard. You can still see the large portholes facing the lake which are now sealed. Inside the building was compressed air tanks boxed into the ceiling. These serviced the foghorn. The emergency generator system was gasoline powered and could supply the house with emergency power. The converted seating, benches once supported these generators.

**#7 STORAGE:** This green, circular building once stored flammable liquids - such as the kerosene which powered the light in the years before electricity. **Go to the front porch of the lighthouse.**

### #8 LIGHTHOUSE - COME INSIDE!

WOW - Look at the spiral staircase. Climb the tower and enjoy the breathtaking view from the outside deck.

If you have any questions, be sure to ask the lighthouse interpreters. They will be happy to assist all visitors.

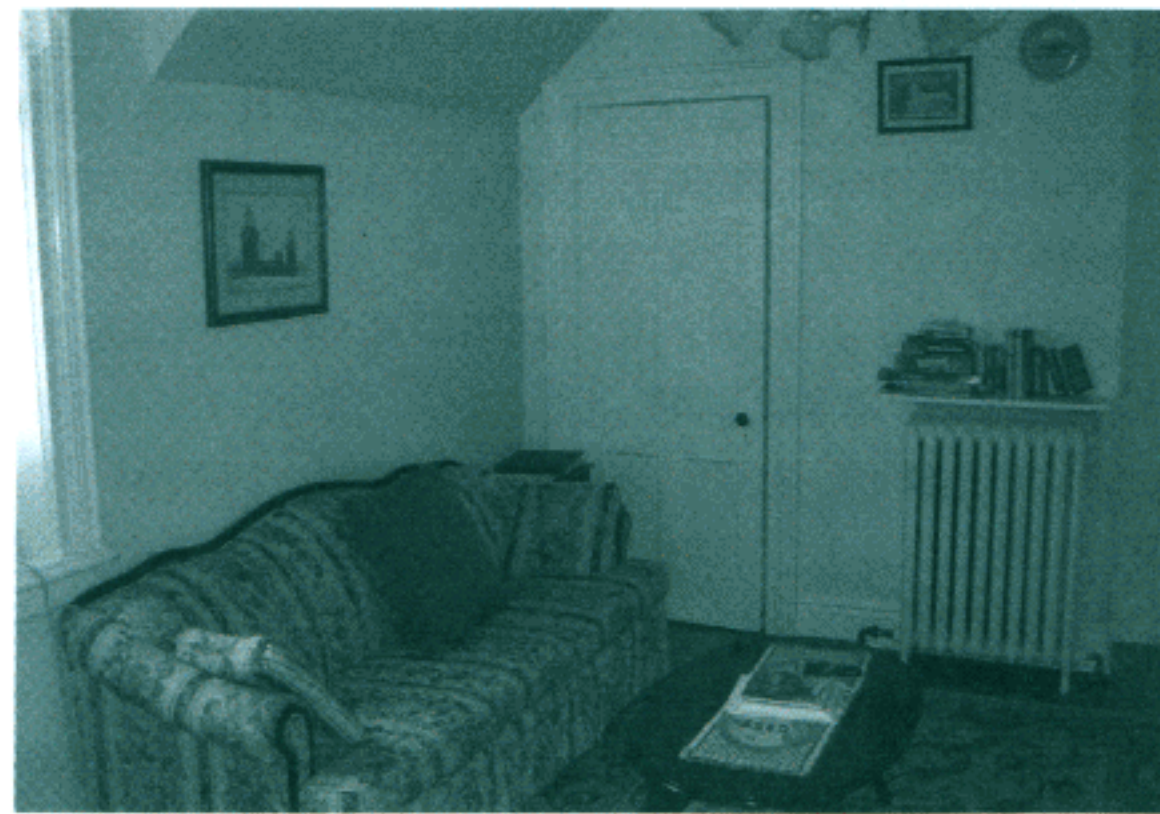
## Lighthouse Cottage

Built in 1875, Thirty Mile Lighthouse originally provided keepers quarters for the lighthouse keeper, assistant keeper and their families.

The Lighthouse Cottage is located on the second floor of Thirty Mile Point Lighthouse. It features a private entrance, three bedrooms with queen size beds, a kitchen equipped with a refrigerator, electric stove, microwave, coffee maker, cooking utensils, silverware and dishes, and a full bath with an old fashioned bathtub that gives a flavor of yesteryear.

The living room features a couch, two chairs, and a writing desk where you can reminisce about what it was like to live and work in an authentic lighthouse. The park will provide blankets, spreads and pillows. Please provide your own queen size linens and bath towels.

There is a beautiful view of Lake Ontario and Golden Hill State Park from the cottage windows. If you enjoy sport fishing in Lake Ontario, there is a dock and boat launch available, although there are no overnight tie-ups permitted.



### Rate

\$1250 per week, \$200 per night

### Rental Procedure

Reservations can be made from two days to eleven months in advance of your planned arrival. Reservations are accepted by telephone at 1-800-456-CAMP (2267) or online at: [www.reserveamerica.com](http://www.reserveamerica.com) or [www.nysparks.com](http://www.nysparks.com)

Deposit: A \$100.00 security deposit will be required upon check in.

Check In: 3:00 p.m.

Check Out: 11:00 a.m.

Cottage Permits: Issued to persons 21 years of age or older.

### Rental Conditions

Peak Season: From the fourth Friday in June to the Friday preceding Labor Day there is a minimum of one week rental and a maximum of two weeks rental. The Lighthouse Cottage operates from Friday to Friday only. Non Peak Season: Two night minimum.

Pets and smoking are not allowed in the Lighthouse Cottage. This facility is non wheelchair accessible.

## Cancellation and Refund Policy

Cancellations made 8 days prior to arrival date will result in a refund equal to the amount paid minus non-refundable reservations fee and cancellation fee, and the first nights' rental fee. No shows will not be given refunds. To cancel your reservation more than two days in advance please call 1-800-777-9644. To cancel your reservation in less than two days please call the Golden Hill State Park directly at 716-795-3885 or 716-795-3117.

## Occupation Policy

The Lighthouse Cottage is designed for six people. Occupancy must not exceed six persons, unless all persons are members of one immediate family (parents and children under the age of 18.) Tents, trailers, campers or vehicles may not be used for sleeping. No subletting, substitutions or registering for others will be permitted. Occupants will be required to furnish linens and towels. Pillows will be furnished by the park.

## Vehicle Policy

All vehicles must be registered at the campground office. The first and second vehicle have free entrance and receive a lighthouse permit; any additional vehicles must pay the daily vehicle use fee. Only two vehicles can be parked overnight on the Lighthouse Cottage site.

## Cleaning Policy

Renters must leave the Lighthouse Cottage and surrounding area clean and orderly. Excess cleaning costs and/or damages will be deducted from the rental deposit.